



The BradCommunications™ Direct-Link™ network adapters provide simple use and fast implementation in connecting notebook or desktop computers with Profibus protocols up to 12 Mbps.

## Direct-Link™ USB100PFB

Easy-to-Use solution

### Features

- RoHS compliant
- Ready to plug, no hardware setting
- High Speed USB Adapter v2.0 & v1.1
- Profibus protocols managed simultaneously:
  - Profibus DP-V0 Master/Slave
  - Profibus DP-V1 Master/Slave
  - S7/MPI Master for Simatic® S7 -300 and S7-400
  - S7/MPI Slave for Simatic® S7-200
  - S5 for Simatic® S5 (95U, 115U, 135U, 155U)
- Profibus speed: 9.6kbps ↔12Mbps
- Software Interfaces:
  - OPC Server (Data Access v1.0a, v2.05 and 3.0)
  - Wonderware DAServer
  - Wonderware I/O Server (SuiteLink, FastDDE)
  - ActiveX Control
  - DLL library 32-bits
  - VI ( Virtual Instruments for NI LabVIEW™)

### Supported OS

- Windows XP / 2000 / 2003 Server



Woodhead is a member of PTO (PROFIBUS Trade Organization), PNO (PROFIBUS Nutzerorganisation e. V.) and France Profibus.



RoHS

CE

UL US



DLL



NATIONAL INSTRUMENTS™  
LabVIEW™

### Overview

The BradCommunications™ Direct-Link™ is a range of automation components for industrial communication. It includes a variety of products such as diagnostic tools, intelligent connectors, tunneling gateways, dedicated fieldbus cards, and software drivers for industrial networks.

Simple as they are affordable, Direct-Link™ products allow you to acquire the equipment to develop your architectures and industrial applications at a lower cost.

The BradCommunications™ Direct-Link™ product line is characterized by its simple use and fast implementation. The solutions are modular and scalable. Moreover, the products are designed to be easily embedded in computerized systems and are available in a wide selection of form factors.

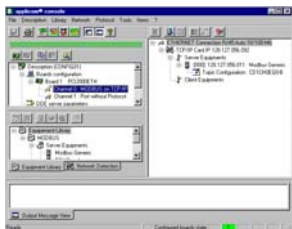
Particularly, the BradCommunications™ Direct-Link™ products are based on a non-intelligent 12 Mbps USB adapters that are especially designed to communicate with Siemens controllers and others compatibles devices set on a Profibus network. Direct-Link™ suits perfectly to applications requiring few CPU resources (for more powerful data through and large application, see applicom® product ranges).

# Direct-Link™ USB100PFB

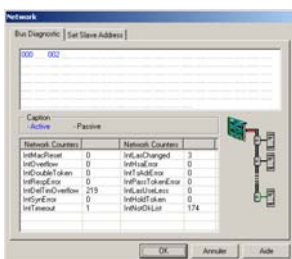


## Software tools

The core of Direct-Link™ PC Network Interfaces lies in effective software tools enabling fast integration of industrial communication into your applications.



Configuration



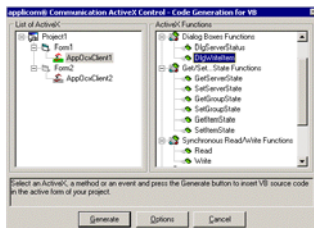
Diagnostics



Testing Tools



OPC Browser



ActiveX Control

## Technical data

Hardware	
<b>Unit</b>	High-speed USB Adapter, Version 2.0 or 1.1 Full speed and High Speed with automatic recognition
<b>Processor</b>	USB : ARM 7, Philips LPC2212 Profibus : 186 core, 48 MHz
<b>Dimensions (L x W x H)</b>	56 x 33 x 93mm (2.20" x 1.29" x 3.66"), Aluminium box
<b>Power supply</b>	5V through USB (no external supply required)
<b>Consumption</b>	350 mA
<b>USB connector</b>	USB Port Type: Mini-B USB Cable A/Mini-B (included in the package)
<b>Operating T°</b>	0°C to +55°C (32°F to 131°F)
<b>Storage T°</b>	-20°C to +70°C (-4°F to 158°F)
<b>RoHS</b>	Yes
<b>Humidity</b>	5 to 95% non condensing
<b>Certification</b>	CE, UL, UL/C
Supported Protocols	
<b>Protocol</b>	<ul style="list-style-type: none"> <li>• <b>S7/MPI<sup>(1)</sup> Master</b> - Siemens S7-300, S7-400</li> <li>• <b>MPI<sup>(1)</sup> Slave</b> - Siemens S7-200</li> <li>• <b>DP-V0 Master/Slave Class-1 &amp; Class-2</b> (3070 bytes INPUT and 3070 bytes OUTPUT)</li> <li>• <b>DP-V1 Master Class-1 &amp; Class-2</b></li> <li>• <b>S5<sup>(1)</sup> Client</b> - Siemens 95U, 115U, 135U, 155U</li> </ul>
Profibus port	
<b>Port type</b>	Profibus port (EN 50170)
<b>Connector type</b>	9 pin, D-sub, female
<b>Electrical Interface</b>	RS485 with galvanic insulation 500 V
<b>Speed</b>	9600 bps to 12 Mbps
<b>LED indicators</b>	2 bicolor leds: Bus fault, Communication status

(1) – Maximum of 40 Simatic® S7 and S5 devices supported simultaneously.

## Ordering information

Part Number	Description
<b>DRL-MPI-USB</b>	BradCommunications™ Direct-Link™ High-Speed USB Adapter for MPI/S7, PROFIBUS® up to 12 Mb, All Data Servers (OPC, Wonderware™, ActiveX™) and DLL Library
<b>DRL-MPI-USB-DLL</b>	BradCommunications™ Direct-Link™ High-Speed USB Adapter for MPI/S7, PROFIBUS® up to 12 Mb, <b>DLL Library only</b>
<b>DRL-PFB-USB</b>	BradCommunications™ Direct-Link™ High-Speed USB Adapter for Full PROFIBUS® (DP, S5, S7/MPI), Profibus up to 12 Mb, All Data Servers (OPC, Wonderware™, ActiveX™) and DLL Library
<b>DRL-PFB-USB-DLL</b>	BradCommunications™ Direct-Link™ High-Speed USB Adapter for Full PROFIBUS® (DP, S5, S7/MPI), Profibus up to 12 Mb, <b>DLL Library only</b>
<b>DRL-UPS-USB</b>	Upgrade license from DLL Library only → All Data Servers (OPC, Wonderware™, ActiveX™) and DLL Library

Contact us: [www.woodhead.com](http://www.woodhead.com) Reference Number: DW2007191 Date published: 06 Jul. 07

**North America:** US +1 800 225 7724 – Canada +1 519 725 5136  
**Europe:** France +33 2 32 96 04 20 – Germany +49 7252 94 96 0 – Italy +39 010 59 30 77  
 United Kingdom +44 1495 356300  
**Asia:** China +86 21 5835 9885 – Singapore +65 6261 6533 – Japan +81 3 5791 4621

BradCommunications™, BradConnectivity™ and Direct-Link™ are trademarks of Woodhead Industries. All the other trademarks are the property of their respective owners. © 2007 Woodhead Industries, a Division of Molex, Inc.